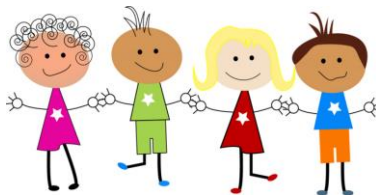


The Evergreen Park Elementary School District 124 Extended Day Program is dedicated to providing a safe, caring, and creative program for our students in their Extended Day hours.



Evergreen Park School District 124 2018-19 Extended Day Program Kindergarten – 5th Grade

Registration

Returning students, their siblings: Registration opens at noon on Tuesday, July 31, 2018, and spaces are guaranteed in the 2018-19 program for registration submitted through Tuesday, August 14, 2018.

All other District 124 students: Registration opens at noon on Monday, August 6, 2018, and will be approved on a first come, first served basis.

To register for the program: Click on the link provided on the Extended Day Program page of the district website or type the following into your browser's URL:
<http://www.ezchildtrack.com/d124/parent>

- **Existing account holders:** Enter your registered email address and password in the *Returning Customers Sign In* section.
- **New registration:** Click as directed in the *New Customers Open Account* section.
- **All:** More directions and information can be found on each registration screen and in the Bulletins section on the Home page of the parent portal.

The registration process may include entering/updating information in the EZChildTrack system, submitting a schedule, and making payment for the first schedule period and registration fee.

Registration will continue as long as space is available.

NOTES:

- To use the program during the first week of school, registration must be submitted by 11:00pm on Tuesday, August 14, 2018.
- **Registration will not be accepted for account holders with an outstanding Extended Day Program balance until the balance is paid in full.**
- Students will not be allowed to attend before or after school care if they are not registered in the Extended Day Program.

Fee Schedule I

Annual Enrollment: Fee is non-refundable.
One Child \$50.00
Family (two or more children) \$60.00

Pre-scheduled: Attendance is considered pre-scheduled for days submitted as part of the Fixed Schedule, PLC Mornings Schedule, or when the Flex Schedule is submitted by the due date/time. Fees listed apply per child, per day.

Before School Care*

7:00 – 8:20/9:20 \$4.50
Breakfast - \$W only: \$1.35

The NE, NW, and SE breakfast programs are sponsored by the Food Service Department. Breakfast fees, if applicable, are paid directly to Food Services.

* Families who need before school care on PLC days only, see Fee Schedule II.

After School Care

3:00pm – 4:00pm \$ 4.50
3:00pm – 5:00pm \$ 8.00
3:00pm – 6:00pm \$11.50

Unscheduled: Higher rates apply when a schedule is not submitted by the due date/time, when extra days are requested to be added to a schedule, and/or emergency days are used. Availability is limited.

Fee Schedule II

The following fees apply to families who use the program on PLC mornings only. Fees are per child, per day.

Annual Enrollment: Waived*
*The enrollment fee will be automatically assessed if the program is used for any other session.

Scheduled drop-off

7:00am-8:20am \$5.50
8:21am-9:20am \$2.50

Contact Information

The Extended Day Program is operated by:

**Evergreen Park Elementary
School District 124**
2929 W. 87th Street
Evergreen Park, IL 60805

The Extended Day Program Office opens for the 2018-19 school year on July 31, 2018.

Office hours are Monday through Friday,
7:30am – 3:00pm.

The Extended Day Program coordinator can be reached at:
(708) 423-0950 x 2182 or
epextendedday@gmail.com

Disclaimer

This flyer is for informational purposes only and the information contained here-in is subject to change.
MAY 2018